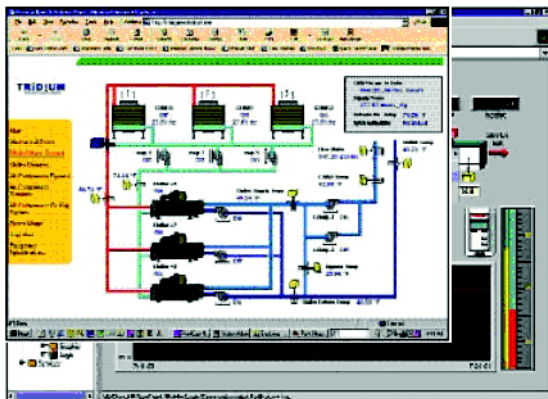


# WEB-S-AX WEBSTATION-AX™

## SPECIFICATION DATA

### APPLICATIONS

The *WEBSTATION-AX™* is a network server for all connected *WEBs-AX* Controllers. *WEBSTATION* is designed to harness the power of the Internet and provide efficient integration of standard open protocols, such as BACnet™ and LONWORKS®. *WEBSTATION-AX™* creates a powerful network environment with comprehensive database management, alarm management and messaging services. In addition, *WEBSTATION-AX™* provides an engineering environment and graphical user interface.



### FEATURES

- Powerful Java enabled graphical user interface.
- Supports an unlimited number of users over the Internet / intranet with a standard Web browser.
- Enterprise level information exchange using an SQL database and HTTP/ HTML/XML text formats.
- *Audit Trail* of database changes indicating user, time stamp and audit action.
- Synchronizes controller databases, database storage scheduling, control and energy management routines.
- Sophisticated alarm processing and routing which includes E-mail and paging.
- Provides access to alarms, logs, graphics, schedules and configuration data with a standard Web browser.
- Password protection and security using standard Java authentication and encryption techniques.
- HTML based help system that includes comprehensive online system documentation.
- Supports multiple *WEBs-AX* Controller stations connected to a local Ethernet or the Internet.
- Provides online/off line use of the *WEB Pro-AX™* graphical application configuration tool and a comprehensive Object Library.



## PLATFORM REQUIREMENTS

**Processor:** Intel Pentium™ IV, 3 GHz or higher.

**Operating System:** Microsoft Windows™ NT 4.0 with Service Pack 4 or higher. Internet Explorer™ 5.0 or later, or Netscape Communicator™ 4.5 or later.

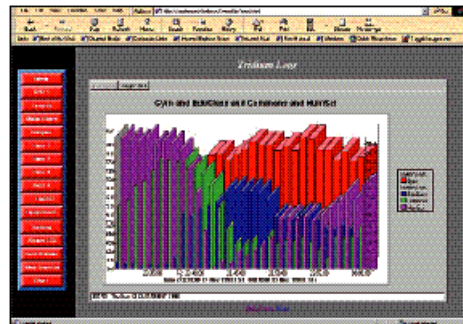
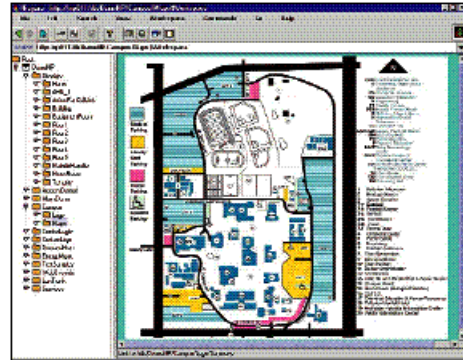
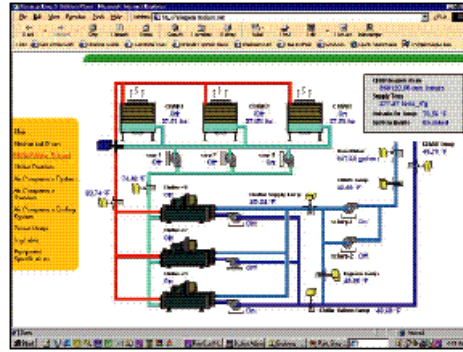
**Hard Drive:** 10 GB minimum, 25 GB for applications that need more archiving capacity.

**Modem:** 56 KB minimum, Full time, high speed ISP connection is recommended for remote site access (for example, TI, ADSL, cable modem).

**Display:** Video card and monitor capable of displaying 1024 x 768 pixel resolution.

**Network Support:** Ethernet adapter (10/100 megabit with RJ-45 connector).

**Memory:** 2 GB minimum



Echelon & LonWorks are trademarks of Echelon Corp. BACnet is a trademark of ASHRAE. Internet Explorer and Windows is a trademark of Microsoft Corp. Netscape Navigator is a trademark of Netscape Corp. VxWorks and JWorks is a trademark of Wind River Systems, Inc. Java is a trademark of Sun Microsystems, Inc. Niagara Framework, is a trademarks of Tridium, Inc. All Specifications subject to change without notice or liability to provide changes to prior purchasers.

### Automation and Control Solutions

Honeywell International Inc.  
1985 Douglas Drive North  
Golden Valley, MN 55422  
customer.honeywell.com

Honeywell Limited-Honeywell Limitée  
35 Dynamic Drive  
Scarborough, Ontario M1V 4Z9

